

General Instructions

Follow these instructions carefully!

Thereafter, all necessary adjustments will already have been made, and all you will need to do is to fasten it to the roof.

Read also "Important Instructions".

Do you have the Rapid System but a new car and new KIT? - refer to "New car? Tips!"

1

First time assembly (A) Raise the locking arms on the back of the load carrier feet and (B) slide the feet onto the bars. (C) To enable you to distinguish the front load bar from the rear load bar and the left-hand ends from the right-hand ends, use the decals provided to identify the feet.

Slide the tightening knobs onto the bars until they snap shut. If you need to remove the knobs - refer to "To remove a tightening knob".

2 Refer to each Kit for more information!

3

Fitting the load carrier onto the vehicle Wash and dry the roof. Open the doors. Carefully place the load carriers on the roof. The feet should be the same distance from the roof edge on both sides of the car (viewed from the front).
Follow the instructions carefully-refer to each Kit.

Alternate tightening of the load carrier Tighten a few turns, alternately on the left and right sides of the car. Press the tensioning tab against the car while tightening. Tighten firmly with hand pressure (corresponding to 4 Nm tightening torque).
 Do NOT tighten one foot at a time – this will cause the feet to slide around on the roof.

After tightening, the tensioning tab and rubber pad positions should correspond to the profiles-refer to each Kit.
 Note: It is very important that the load carrier feet are positioned the same distance from the roof edge.

General Instructions

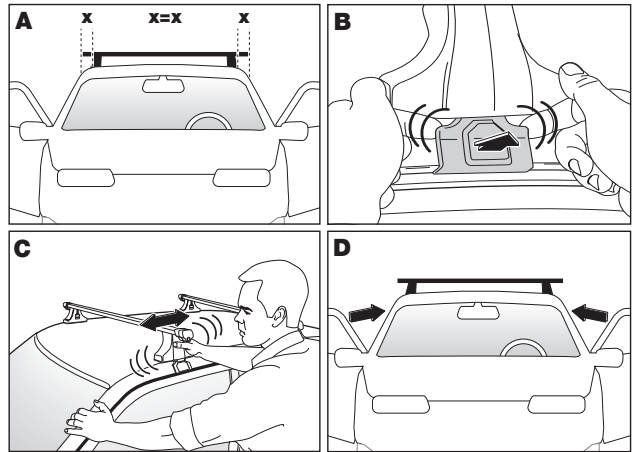
Check the tightness

(A) The load carrier feet should be the same distance from the door edges on both sides of the car.

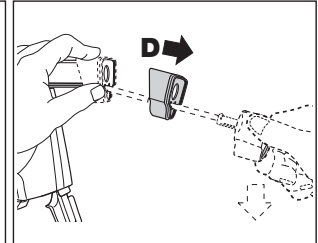
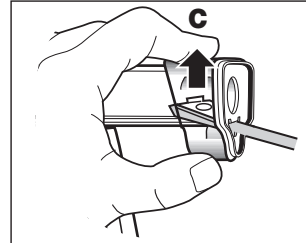
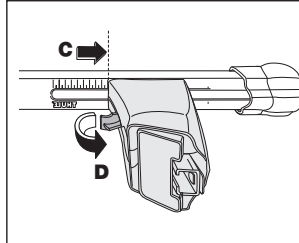
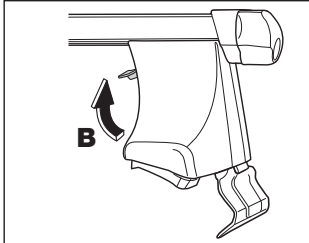
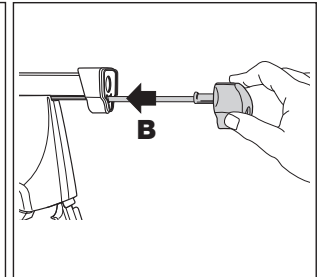
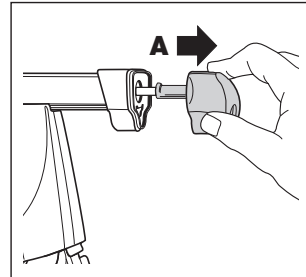
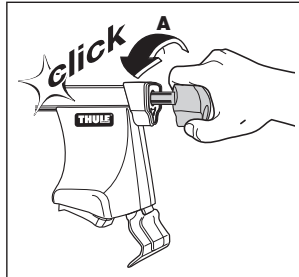
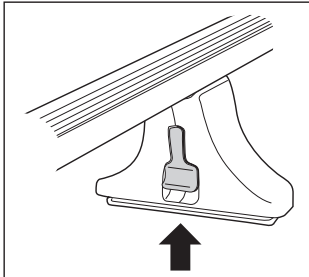
(B, C) It should not be possible to move the tensioning tab and load carrier, see the illustrations. The bars may curve slightly downwards in the middle; this is entirely normal.

(D) Carefully shut the doors of the car. If the doors do not shut properly, this may be because the load carriers have not been sufficiently tightened, because they have slid out of position on the roof, and/or because the tensioning brackets were not pressed in sufficiently against the roof while the load carriers were being tightened.

Removing the load carrier. To make fitting easier the next time, undo the knobs the same number of turns on each of the load carrier feet.

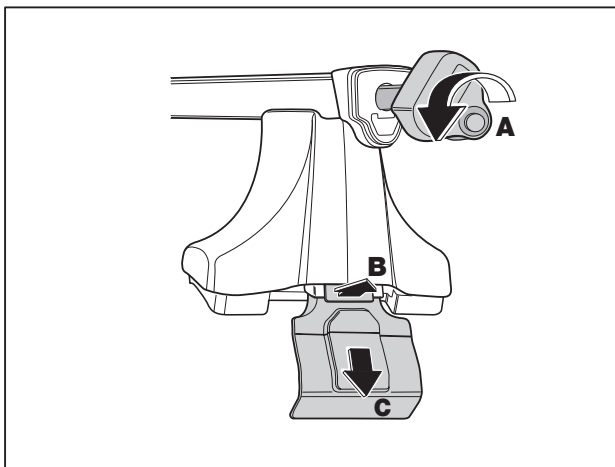


New car? Tips!



Changing load carrier feet Have the feet locked in position?
New car? Undo the foot as in the illustrations.

To remove a tightening knob



Removal/replacement of tensioning tab

New car? Undo the tensioning tabs as in the illustrations.